

**Workflow Color Management Server  
ICC Profiles support**



✦ ICC Profile Processor® (ICPP) automates the application of ICC profiles through an easy to use user definable Hot Folder system. ICPP is a component of the AlwanColorHub® framework.

**DAM, SoftProofing, Digital Printing and more...**

You can standardize the use of ICC profiles with **ICPP** helping you to harmonize colour spaces and improve reproduction quality :

- **Convert** mixed RGB - CMYK - LAB - Gray (images and vectors) into unified standardized colour spaces for production and management purposes.
- **SoftProof** CMYK data can be processed into defined monitor capable RGB colour spaces. Easy e-mail and remote SoftProofing!
- **Digital Print** prepare your files easily and automatically for proofing and digital print applications.
- **Gray and grayscale** convert RGB and CMYK to grayscale for all sorts of print effects and even newspaper printing. You can also convert Gray to RGB and CMYK!

✦ When combined with Alwan PEM CET Proof®, ICPP can facilitate a complete colour solution converting colours to print and then automatically produce a digital proof on any Epson Ink Jet system.

✦ ICPP can save the print ready proofed file for further use in other print and media projects.

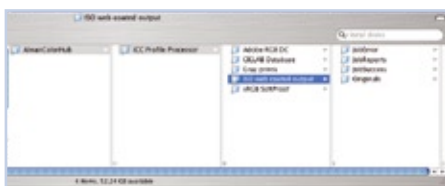
**File formats**

- **ICPP** supports the following file formats : TIFF (lzw), JPEG, EPSF, PICT, PDF, EPS, TIFF-IT...
- **ICPP** supports PDF files including PDF/X-1a and PDF/X-3 to the standards maintained by the ECI and the Altona Test Suite® Visual 1.2 PDF/X-3 file.
- **ICPP** color manages image and vector data automatically.



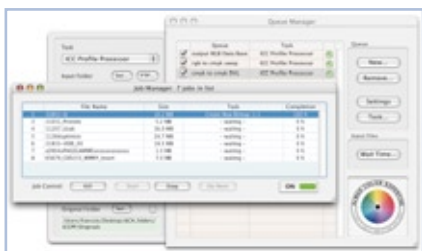
## ICC Profiles Support

☐ ICCPP supports ICC v2 and v4 Device and DeviceLink Profiles. You can use Alwan LinkProfiler® or your custom DeviceLinkProfiles in order to apply specific gray to gray, gray to K or CMYK to CMYK conversions.



☐ Alwan LinkProfiler® is an internationally recognized standard for Device Link Profile construction (DVLP). Features Include preservation of Black and CMY purity on all levels and Includes Intelligence on the preservation of purity In multicolor blends and vignettes. DVLP's help you avoid CMYK -> CIELa\*b\* -> CMYK conversions which don't preserve purity of colours in conversion.

☐ ICC Profile Processor® is a powerful colour automation tool that when combined with the power of Alwan LinkProfiler® and PEM CET Proof® will help you to achieve greater control in your workflow and ultimately deliver a finer product to your client.



### System requirements

Mac OS X (10.3 or later)  
Minimum : G4/512 MB RAM (1GB RAM for dual-processors)  
Recommended : dual-processors G5 / 2 GB RAM Optimized for dual-processors

### Supported formats :

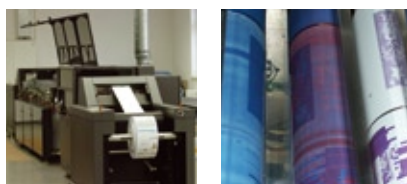
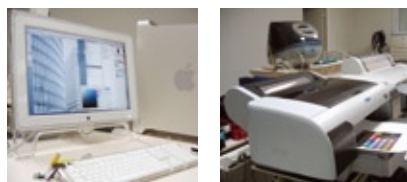
Image Files : EPSF, JPEG, TIFF, PICT, PDF...  
Documents : PDF, PDF-X, EPS, TIFF-IT...

### Simple integration

into multi-platform networks via FTP, Samba connections, afp connections...

### Performance

xServe G5 2 x 2 Ghz, 2 GB RAM : 2000 pages per hour (broadsheet format).



### ALWAN COLOR EXPERTISE

31, Chemin du Plan du Loup  
69110 Sainte-Foy-lès-Lyon, France  
Tel : 33 4 72 16 08 82  
Fax : 33 4 72 16 95 87  
info@alwancolor.com  
www.alwancolor.com

