

Alwan All in One Color Management Server

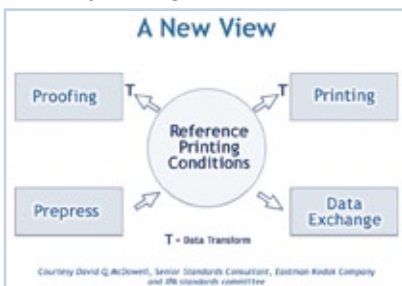


• Alwan color Expertise, creators of MEC (Monitor Expert Calibrator), PEM (Proof Expert Manager), LinkProfiler, and ColorPursuit introduce the very latest addition to their product suite of color solutions: **AlwanColorHub®**.

▣ AlwanColorHub® allows you to choose the type of color processing you need to apply to your images and files in a very simple and modular way.

Why AlwanColorHub?

• **AlwanColorHub®** has been designed and developed to fit into the future standards and working practices which rely on the exchange of Standard/Reference data between different parts of the workflow and on the adaptation/optimization of data on the printing site.



Available tasks with AlwanColorHub

- **CMYK Optimizer Server®** : A unique ICC based tool for preflighting standardization and dynamic correction of color separation parameters that may have an impact on the printability of files (TAC, press/paper dot gain, black generation).
- **ICC Profile Processor®** : Ideal tool for standard ICC based color conversions, from any source color space to any destination color space.
- **PEM CT Proof®** : A simple yet powerful software for the production of controlled and certified contone proofs which are compliant with the latest ISO standards.

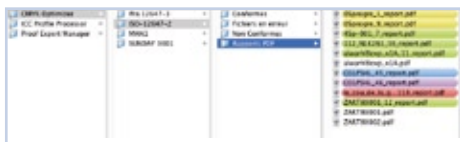
▣ All these modules work in a totally cooperative and transparent way by means of a hot folder based file management system which ensures a simple and smooth integration with your existing workflows.

Alwan
Color Expertise



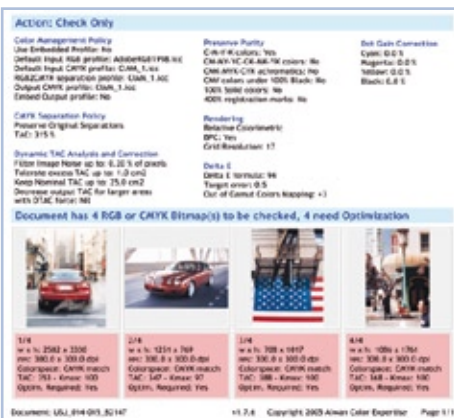
Thanks to AlwanColorHub® hot folder system, you can easily combine different tasks to address all your production color management needs.

For example, files deposited in the input folder are checked. Those carrying a compliant TAC are moved to the output folder, those carrying an excessive TAC are optimized for the destination press (SUNDAY3000 for instance), and all production files are then proofed on your digital proofer. All these tasks are done automatically without any manual intervention.



Reports are very useful to monitor statistics such as, ink consumption, ink savings, rate of compliant files etc that may be used internally or with your clients in the event of encountering a printing problem with a job.

AlwanColorHub® generates a log and/or a PDF report for each processed file detailing the processing operations and results.



Maximum stability and reliability

CrashProof® technology has been developed by Alwan in order to ensure maximum stability and reliability for its software in demanding production environments. Each required “task” (preflighting, correction, proofing etc) is managed by AlwanColorHub application as well as by the System as a totally independent process. In case of file error which can cause an application or system dysfunctioning, CrashProof® kills the faulty task, signals the error in the application log and launches the next task without any interruption of production.

System requirements
 Mac OS X (10.3 or later)
 Minimum: G4/512 MB RAM (1GB RAM for dual-processors)
 Recommended: dual-processors G5 / 2 GB RAM
 Optimized for dual-processors

Supported formats
 Image Files: EPSF, JPEG, TIFF, PICT, PDF...
 Documents: PDF, PDF-X, EPS, TIFF-IT...

Networking
 Easy integration in multi-platform networks using FTP, samba, afp...

Performance
 xServe G5 2 x 2 Ghz, 2 GB RAM:
 1300 pages per hour (broadsheet format, CMYK Optimizer Server 1.7 mode «Check & Optimize», 100% files tested, 60% non-compliant files requiring optimization).



ALWAN COLOR EXPERTISE

31, Chemin du Plan du Loup
 69110 Sainte-Foy-lès-Lyon, France
 Tel : 33 4 72 16 08 82
 Fax : 33 4 72 16 95 87
 info@alwancolor.com
 www.alwancolor.com

