



# EFI™ eXpress

Photo & Proofing to Go – Productive, Cost-Effective and Accurate

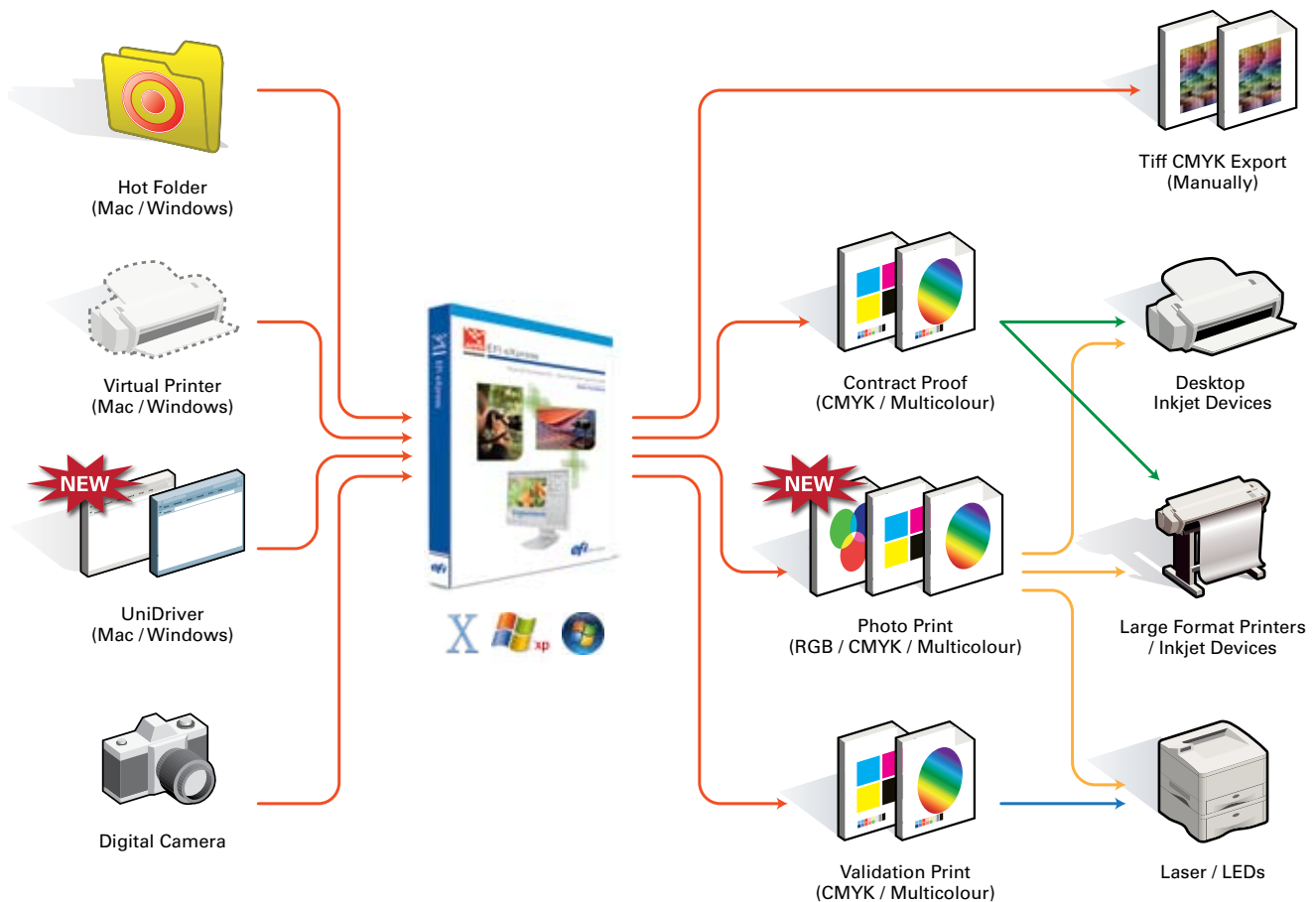
Graphic Arts Solutions



# Cost-Effective, Powerful Solutions for Accurate Photo Prints and Proofs

Creating brilliant photos or generating proofs that predict your final print job, is essential in today's demanding print environment. Whether you work as a photographer, creative director, print buyer, or designer, and whether your main concern is high-quality photo prints or validation and contract proofing, EFI™ presents two new products to satisfy your needs. Both help you deliver high-quality pieces even when working with a limited budget. EFI eXpress for Photo and EFI eXpress for Proofing are two welcome additions to EFI's software RIP solutions that are ideal for producing high-quality proofs and photo prints in a cost-effective manner.

## EFI eXpress Simplifies the Production Process





### EFI eXpress for Photo Delivers Excellent Results Easily

The EFI eXpress v4.1 for Photo software RIP is easy to set up, easy to use, and provides high-quality photo print production. The automation features let the photographer concentrate on his creative work.

Instead of wasting valuable time configuring the print production of photos, collections (single and multi-image templates) and contact sheets, creative professionals can focus on being creative. A comprehensive set of production tools such as cropping, rotating, crop mark support can be operated easily. Automated and manual collection/nesting functionality improves media utilisation and thus saves expenses.

Moreover this new product provides colour and printing presets with an intuitive and simpler "every day work mode" for faster processing of common tasks. The included EFI Unidriver allows to control the RIP as easy as using a Windows printer driver.

### EFI eXpress for Proofing Ensures High Quality Affordably

The EFI eXpress v4.1 for Proofing software RIP offers the same ease-of-use and all the features of the eXpress for Photo version. Additionally eXpress for Proofing provides further valuable features to perform high-quality validation and contract proofing.

The new EFI Colorproof® XF 4.0 based spot colour simulation technique for optimal spot colour simulations makes spot colour management easy, e.g. it allows for intuitive one-click spot colour customisation. Consequently PANTONE, DIC, HKS and Toyo spot colour libraries are part of the product.

The version's native PDF support (Adobe PDF Print Engine) and the support of the Adobe PostScript 3 Engine safeguard that PDF, PS and EPS files are ripped correctly and lead to predictable print results.

It is self-evident that EFI's eXpress for Proofing includes the latest Ugra/Fogra (v2.2 & v3.0) and IDEAlliance ISO 12647-7 2009 media wedges and supports all relevant file formats for the creative and proofing processes.

**Most importantly:** what sounds so powerful can be operated incredibly easy. Thanks to EFI eXpress' setup-wizard, colour management presets, control wedges and spot colour simulations are ready-to-use right after the installation of the product.

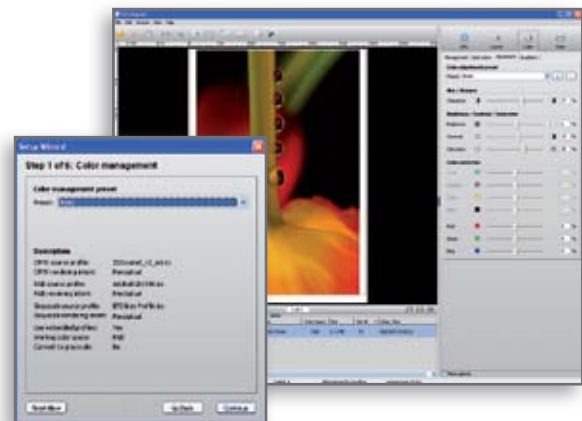
### Choose the Level of Control that Suits Your Company Best

EFI eXpress v4.1 for Proofing includes all the aspects of EFI eXpress for Photo. Both are easy to install, easy to use, and both are based on the proven EFI Colorproof XF high-end colour technology that has been designed to fully support all industry standards. The eXpress product family provides an attractive upgrade path (EFI eXpress for Photo to EFI eXpress for Proof and EFI eXpress for Proof to EFI Colorproof XF) as your business and needs grow.

### Ready to Help You Succeed From the Moment You Open the Box

These new products include professional ICC colour management features such as the support of multi-colour (up to 7 channels) and device link profiles.

Both eXpress solutions are designed to be easy to use for experts and novices alike. They include wizards to easily license, register and set up the application, and accommodate all industry standards for photography proofing and production. Colour and printing presets for Photo, Proofing, Production, Business Graphics and more are part of the feature set, too. Both the Photo and the Proofing solution give you the ability to quickly backup and restore application settings, as well as automatic update reminders.



EFI eXpress wizards make setting up the application easy!

### Powerful Support for the Work You Do

These new products include 1,600 individually created printer linearisations and ICC profiles right out of the box, which you can easily and effortlessly update via any web connection. Both of these new products support a continuously updated list of more than 150 printers from Agfa®, Canon®, Encad®, Epson®, HP®, Mimaki®, Mutoh®, OKI®, Roland®, Seiko® and Xerox®.



EFI eXpress provides optimal tools for efficient photo production and colour accurate proofing.

### Compatible with Industry Standards

The software RIPs EFI eXpress for Photo and eXpress for Proofing are designed to support industry standards. They provide cross-platform support (Mac® OS X and Windows®, including Mac OS 10.6, Windows Vista™ and Windows 7) and full EXIF support with GPS coordinate tracking. The solutions colour management has been designed with all relevant industry standards in mind e.g. ICC, PDF/X, ISO (12647-7), SWOP, and GRACoL. And finally both eXpress solutions accept popular file formats including TIFF, JPEG, JPEG 2000, RAW, PSD, ImageEPS and ImagePDF, while the eXpress for Proofing version additionally supports EPS, PS, PDF and the Remote Proofing Format (RPF). It goes without saying that both products are fully compatible with all EFI Colorproof XF configurations.

### Print to win with EFI

EFI ([www.efi.com](http://www.efi.com)) is the world leader in digital print servers and controllers, superwide format printers and inks, wide-format printers, industrial inkjet printing systems and APPS solutions. EFI is dedicated to giving customers a competitive edge with award-winning, scalable solutions from creation to print that maximise productivity and increase profits. EFI maintains 23 offices worldwide.