

Intelli Proof 240_{motion} Intelli Proof 260_{motion excellence}



Gamut Plus Technology**



14 bit precision



Zero Defects Policy*



3 years warranty



Motion optimized



* No defective Pixels in the center area (66x360), max. 2 defective pixels in the remaining area ** Gamut Plus only with motion excellence units



TFT-Display for color precise HDTV or cinema workflows without compromises.

Full HD Post Processing Displays with ITU-R BT.1361-compliant calibration

Quato Intelli Proof motion TFT-Displays

The new Intelli Proof motion displays are optimized for Video editing, cutting and color correction (grading). As color confidence and color management for motion content is as essential as it is for prepress and photography, the new displays have been developed by using the same calibration technology as Quato's highly awarded Intelli Proof and Intelli Proof excellence displays. With a special wide color gamut panel, the model 260 is able to reproduce nearly the full digital Cinema (DCI) gamut while the model 240 is primarily focused on the PAL-Standard and HDTV. Both units support NTSC and PAL signal while the integrated 14bit hardware-calibration ensures an excellent color reproduction. Apart from professional video input- and output-interfaces like SDI-HD and Component, the display also features two DVI-connectors for computer based connections.

- › Video-optimized TFTs with 24" / 26" size and HD+ resolution of 1.920 x 1.200 pixel
- › direct calibration of the 3x 14bit LUT and 30 bit color output
- › HDTV (ITU-R BT.1361 / BT.709) or DCI (Gamma 2.6, 6.300K) compliant calibration
- › iColor Display 2 calibration-software, measurement device and hood included
- › 48Hz (Cinema), 50Hz (PAL) and 60Hz (NTSC) modes, Picture-in-Picture feature
- › SDI-HD-, Component-, S-Video RGB- and DVI-connectors

Features

Precise adjustments

The Quato iColor Display Software adjusts the Intelli Proof's internal calibration processing unit with up to 42 bit resolution. Instead of up to 256 steps with a software calibration, this solution uses up to 16.384 steps to optimize the display. Additionally the monitor is able to show 1024 gray or billions of colors by using a frame modulation technology and shows smooth gradients and superb color fidelity. The large gamut shows a high congruency of the DCI- and HDTV-standards.

Video features

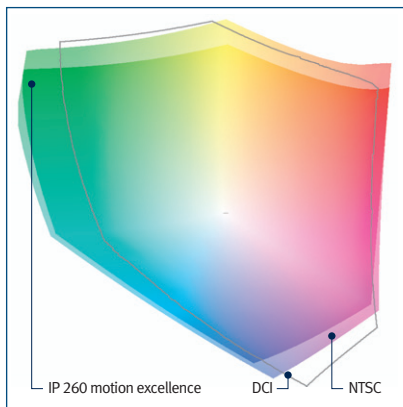
In contrast to the majority of the TFT displays used for image or video editing, the Intelli Proof motion displays can synchronize to 48hz (Cinema), 50hz (PAL) and 60hz (NTSC). This avoids the necessary pulldown with PAL or Cinema content on 60hz TFTs that creates image tearing and non-fluent playback. A variety of analog and digital input/output interfaces, that use one central calibration, and the picture-in-picture mode allow video editing and video controlling on one unit. Furthermore, the units

can show either full screen or 1:1 with all interfaces and can replace classic CRT-controlling displays.

Software

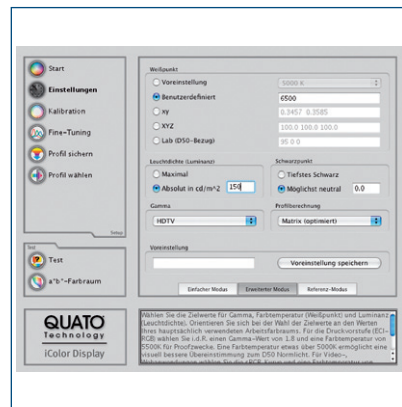
The included iColor Display Software can work with predefined presets for DCI, BT.709 or HDTV and can be individually configured. The sophisticated reference mode allows matching a variety of screens to harmonize the color reproduction in a working environment for Quato and also for non-Quato displays.

Color Gamut and Reference



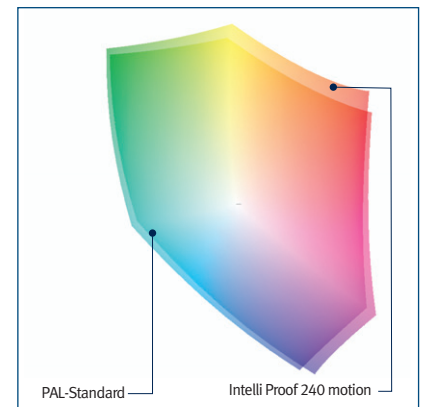
Colorimetric Gamut comparison

The colorimetric projection shows the high congruency to the NTSC-1953 Gamut and the expanded Gamut according to DCI v1.1.



iColor Display 2 Software

The included calibration software allows the exact adjustment to the requirements of HDTV, DCI and other standards.



Colorimetric Gamut comparison

The colorimetric projection shows the high congruency to the PAL/ SMPTE-C-Standard for HDTV and DVD applications.

Specifications

Panel-type and -size, speed, viewing angle

Dual-Domain S-IPS, 24" or 26", 12ms (S-W), 10ms (G-G), 178° horizontal / vertical

Gamut-size

24": PAL-Gamut (75% NTSC)
26": DCI-Gamut (98% DCI), xvColor (93% NTSC)

Contrast and luminance

24": 700:1, 400cd/m² (typical)
26": 1.000:1, 500cd/m² (typical)

Native resolution and bit depth

1.920 x 1.200 Pixel @ 30bit (2,3 Mega pixel)

Frequency

horizontal 30- 92kHz, vertical 50 - 85Hz

Synchronisation (DVI-connector)

48Hz progressive Cinema
50Hz progressive PAL
60Hz progressive NTSC

Ergonomics

rotate: -90° to +90°
tilt: -5° to +35°
lift: 6 cm

Connectors

digital DVI-D and analog/digital DVI-I
USB-Port for calibration
SDI-HD in/out
Component in/out
S-Video in/out
CVBS in/out und Xs in/out

System requirements

Mac OS X / Windows 2000, XP

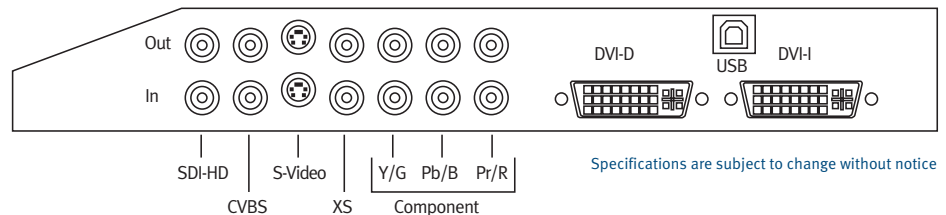
Pixelerrors

ISO 13406-II, additional Zero Pixel in Center

Warranty

36 Month
Bring-In-Business-Service

Connectors



Specifications are subject to change without notice

Power consumption

Max. 80 watt (use)

Regulations

TCO 95, TÜV-Bauart geprüft, FCC, CE, UL

Calibration

Automatic hardware-calibration of the 3x 14 bit Look-Up Table and luminance for DVI, manual hardware-calibration and manual calibration with video sources like SDI

Measurement device

4-channel Silver Haze Pro Colorimeter

Supported measurement devices

Quato Silver Haze Pro Colorimeter, XRite Eye-One Display and EyeOne Spectrophotometer