

iColor Display 3



Sophisticated display calibration software

iColor Display is a highly precise display calibration solution with extended support for third party wide gamut and white-LED displays. Its straight forward and intuitive user interface makes the calibration process a snap; even for beginners and semi trained personal. It's the only software available today that support hardware gamma adjustment and has unique certification features. iColor Display is compatible with a variety of measurement devices.

- › Supports all necessary manual adjustment methods
- › Hardware gamma adjustment for displays that support these feature
- › White-LED and wide gamut correction for all supported colorimeters
- › Integrates a manual hardware luminance control for TFTs and CRTs
- › Includes certification and verification features
- › Unique whitepoint editor and sophisticated spot color measurement
- › Supports Xrite EyeOne series, Quato Silver Haze Pro and Datacolor Spyder 2/3
- › The site license enables the usage on all displays in the working environment

Features

iColor Display's straight forward and intuitive user interface makes the calibration process a snap; even for beginners and semi trained personal. iColor Display supports the user with context sensitive help at the bottom of the window.

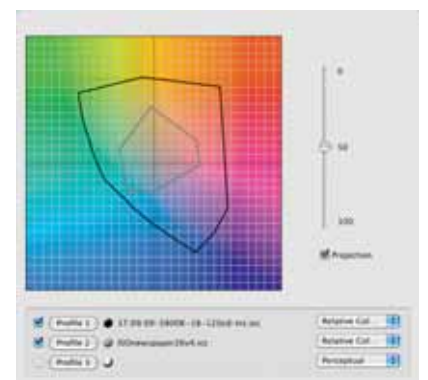
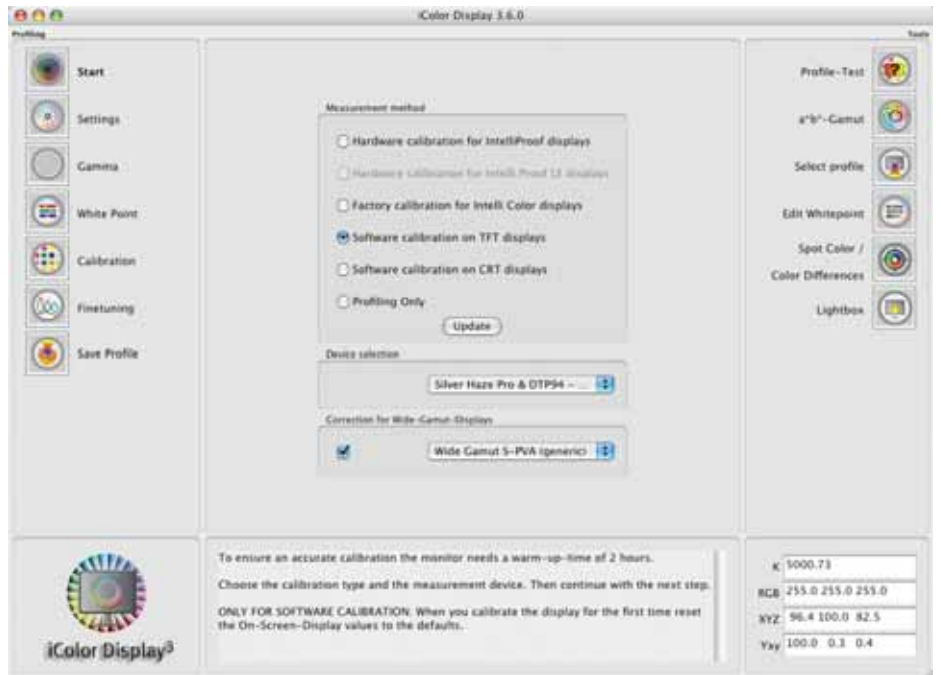
iColor Displays offers a full featured setup with access to all values necessary for a perfect calibration result. The white point, Blackpoint, gamma and luminance are available or preset is used. The calibration procedures are performed manually with interaction from the user. If the display supports Gamma-adjustment, the software can even adjust the displays' gamma to the chosen preset. CRTs are also supported. After the calibration, the user saves the profile and the process is completed.

The human eye recognizes colors not always the same way a colorimeters or spectrometers do. Due to that, iColor Display allows the user to adjust the whitepoint for a perfect match for display to display comparisons or between display and print/proof in a viewing booth.

iColor Display allows you to save the profile in two different ways without the need of a recalibration. One can choose between a primary matrix-, an optimized matrix- and a LUT-profile. Three chromatic adaption to match the color rendering to the human eye's reception at whitpoints other than D50 are available. These chromatic adptions compute the display's whitepoint other than D50 back to the 5.000K basis.

A set of testing- and evaluation-features is available to ensure the best results. After all optimising and evaluation, an a/b-diagram shows the gamut of the display in comparison to other output or reference devices.

The all-new Spot Color feature allows to measure a color either in iColor and the same color in Photoshop or completely independent from iColor Display. The software will report the color deviation to trace the color workflow for example.



Specifications

System requirements

Mac OS X from 10.3.9 / Windows XP32 / Vista & Windows 7 32/64

Part number

050217 iColor Display 3



QUATO

Quatographic Technology GmbH
Hansestrasse 47b

38112 Braunschweig
Germany

fon: +49-(0)531-281381
fax: +49-(0)531-2813899

url: www.quato.de
mail: info@quato.de